



AERIAL VIEW

EXPLANATORY TEXT

New sculptural "podium" leans on the Observatorielunden. On the top of it there's an extensive, public observation deck, from where there's also a connection to the upper level of the Observatorielunden.

The new Corner is on the same axis as the Observatory and the middle point of Asplund's Library building. The podium type of mass accents the role of Asplund's Library building in the cityscape.

...

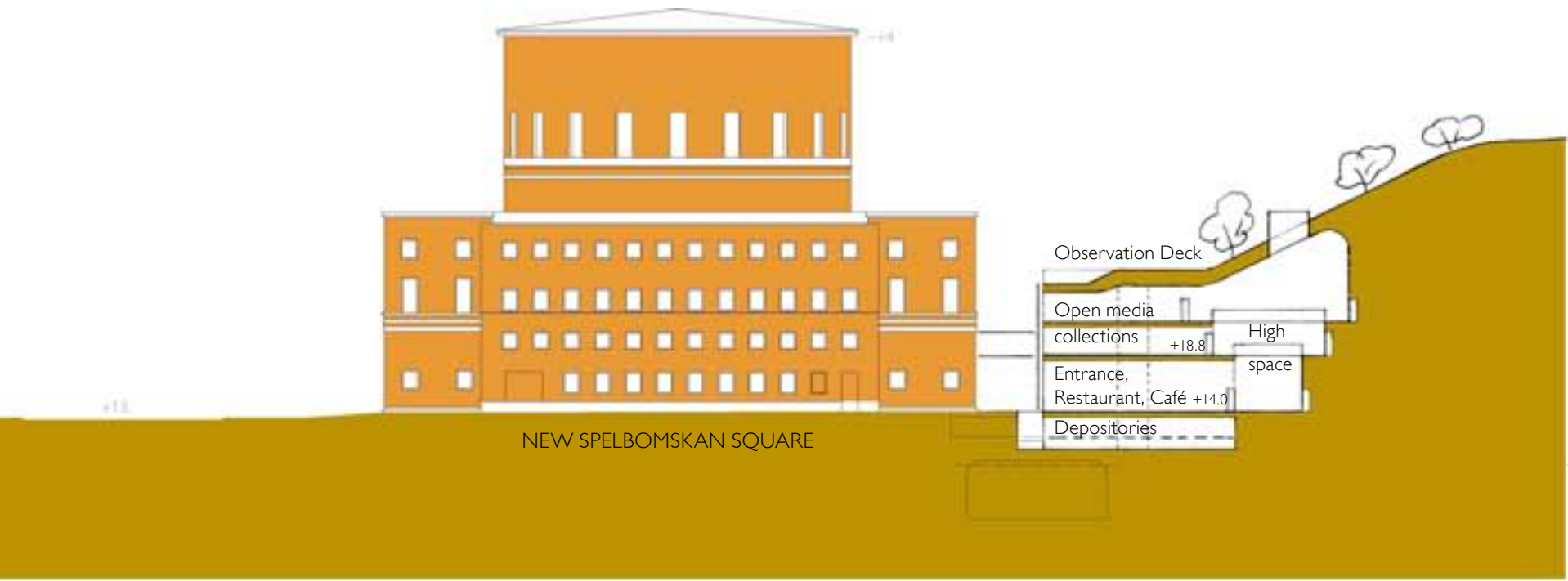
The library complex's main entrance square with water pools and plants opens towards Odengatan. The outdoor spaces of the restaurant and café are located next to the main entrance on the square.

There's also an easy access to the entrance area from the direction of Observatorielunden and old Library Garden.

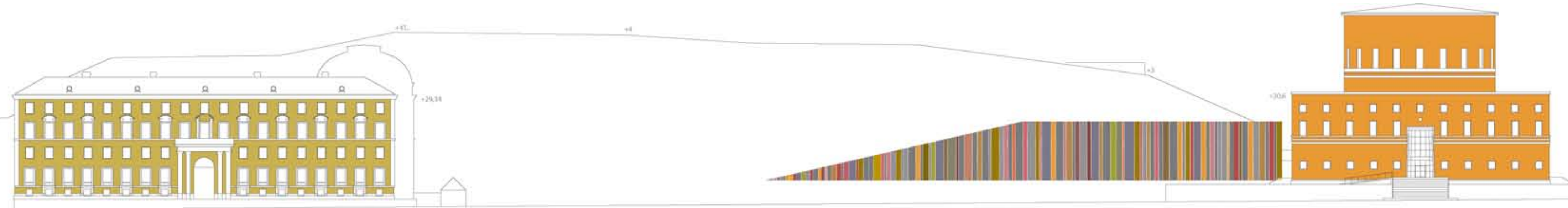
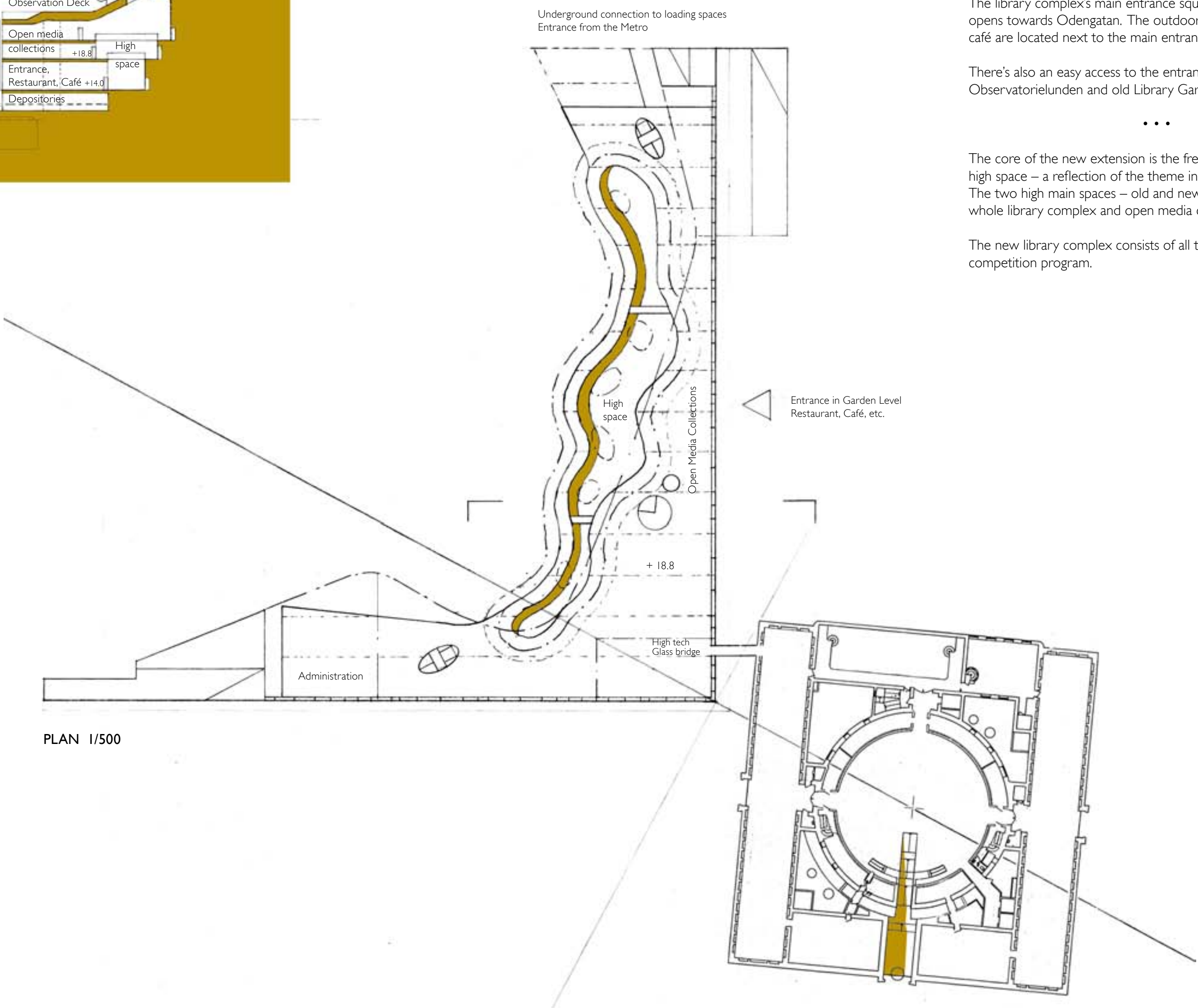
...

The core of the new extension is the free formed, dramatic and unique high space – a reflection of the theme in Asplund's Library building. The two high main spaces – old and new – are the highlights of the whole library complex and open media collections spaces.

The new library complex consists of all the spaces required in the competition program.



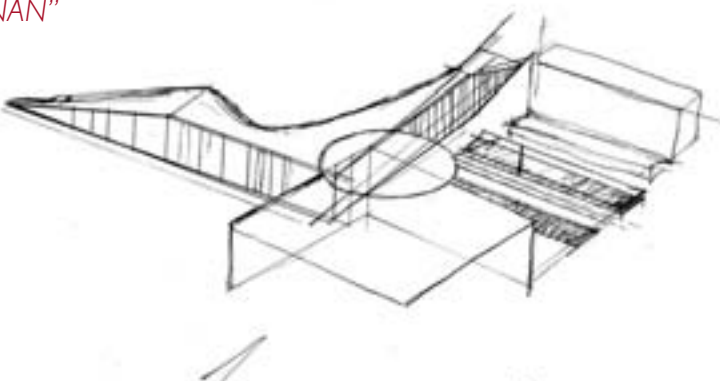
SECTION 1/500



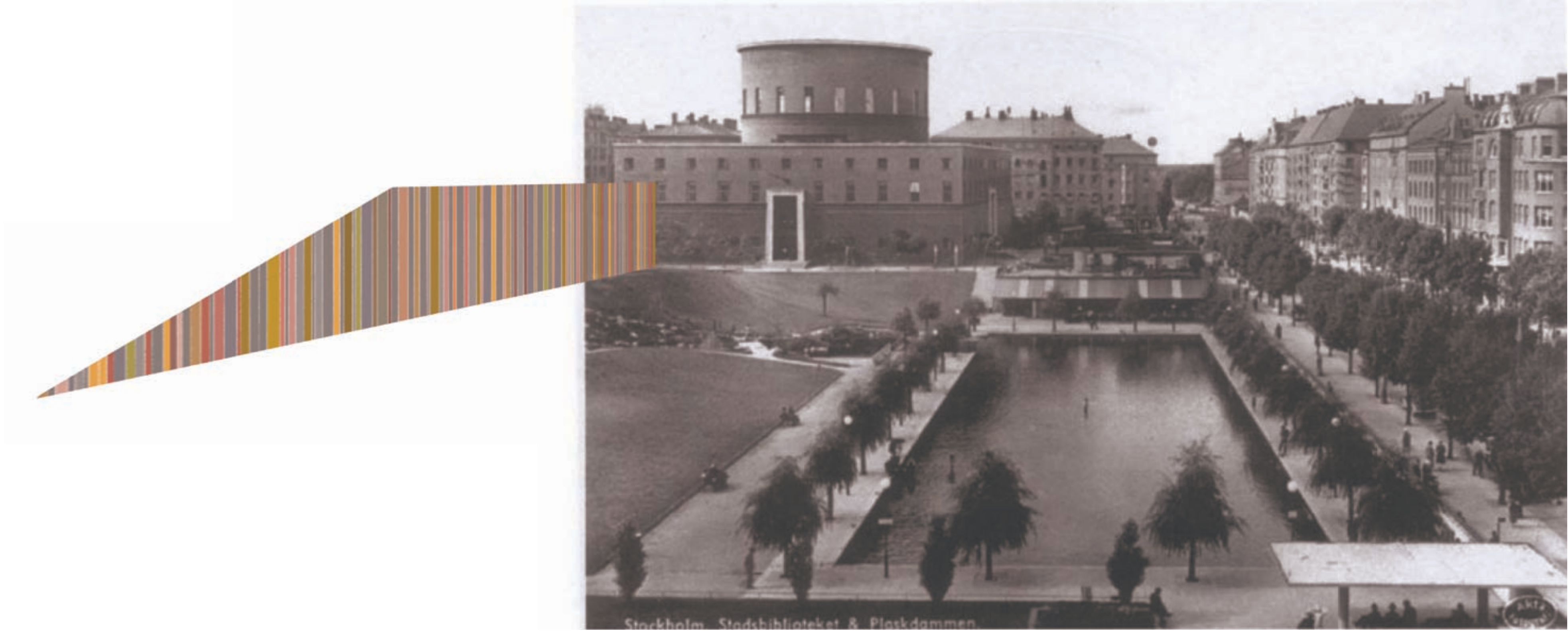
ELEVATION SVEAVÄGEN 1/500

OLD LIBRARY PARK AND POND

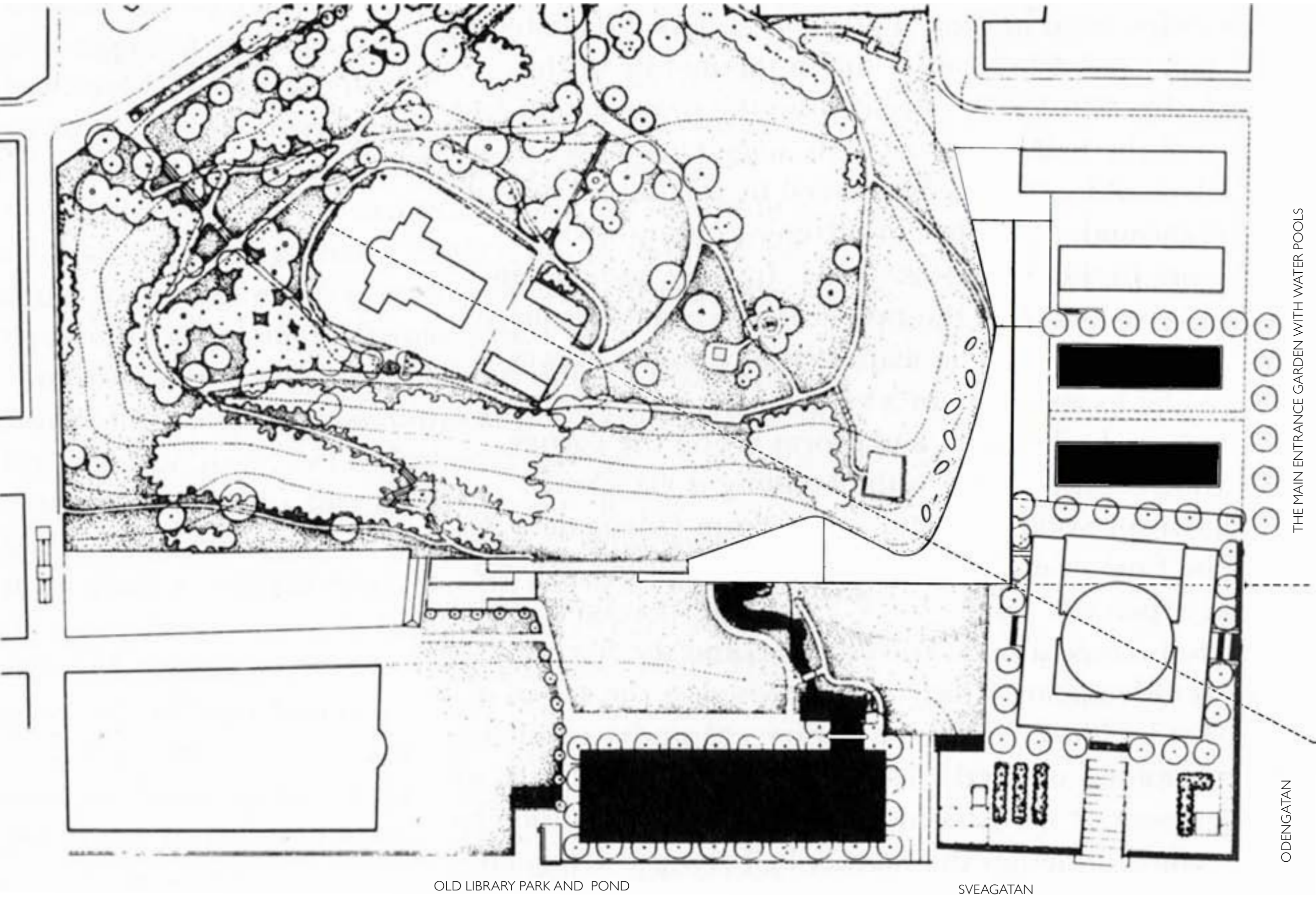
"DIKTHÖRNAN"







VIEW FROM OLD LIBRARY PARK AND POND



SITE PLAN 1/1000



VIEW FROM ODENGATAN



ELEVATION ODENGATAN

"DIKTHÖRNAN"

